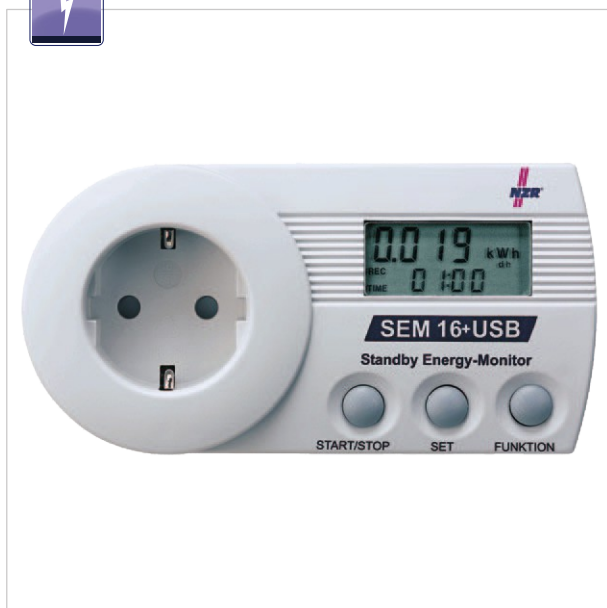


# Standby-Energy-Monitor SEM 16+ USB



Tested predecessor SEM 16

## Description

- Instrument to determine electrical values
- 2-digit display for measured values
- Operation with 3 function buttons
- Measuring safe up to 3680 W
- Precision class 1 in accordance with IEC 1036
- Measuring and memory values remain without power
- Plug for earthed receptacles with protection contact
- Optional with plug of other countries
- Customized promotion print possible
- Data logger function readout via USB interface

## Measuring values

- Energy consumption in kWh with three decimal places
- Costs with three decimal places
- Min. power in W with one decimal place
- Max. power in W with one decimal place
- Current power in W with two decimal places
- Current in A with three decimal places
- Current voltage in V with one decimal place
- Equivalent CO2 consumption in kg with three decimal places
- Frequency in Hz without decimal place
- Idle power in Var with one decimal place
- Apparent power in VA with one decimal place
- Phase shift in angle without decimal places
- Power factor cos phi with two decimal places

## Functions

Same function range as SEM 16+ plus displays continuously the process of power, the current and the voltage consumption (load profile). It is possible to determine the coefficients for power, current and voltage consumption covering the measurement period.

## Data logger

- Data logger function for the measured variables current, voltage and power
- Adjustable time integral (1,2,3,4,5,6,10,12,15,20,30,60 min.)
- Real-time clock integrated
- Storage volumes of 14.000 values
- Data readout via USB interface
- Data cable and software included

Distributed by:



**testoon**.COM  
The measurement website

99, rue Beranger 92320 Chatillon - France

Tel : +33 (0)1 71 16 17 00; Fax : +33 (0)1 71 16 17 03

[www.testoon.com](http://www.testoon.com)

Technical Data	SEM 16+ USB
Voltage (U)	230 V; +/-10%
Current (I)	16 A
Frequency (f)	50/60 Hz
Measuring range (P)	0,1 - 3.680 W
Precision	1 %; +/- 1 Digit
Self consumption (Pe)	< 1 W
Temperatur ranges (Tr)	0 ... +45° C
Protection class	IP 20
Dimensions (W x H x D)	138 x 70 x 57 mm
Weight	0,2 kg
Order information	Item No.
SEM 16+ USB	08030301

