


1736/1738 Power Logger

Quick Reference Guide

⚠️ Warning

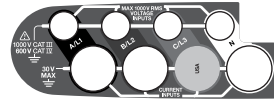
To prevent possible electrical shock, fire, or personal injury, read the "1736/1738 Safety Information" before you use this Product.

Go to www.fluke.com to register your product, download manuals, and find more information.

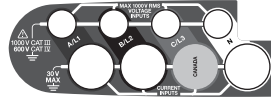
 Consult user documentation

Setup

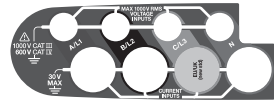
USA (4275029)



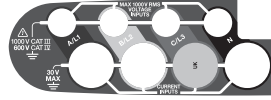
Canada (4280546)



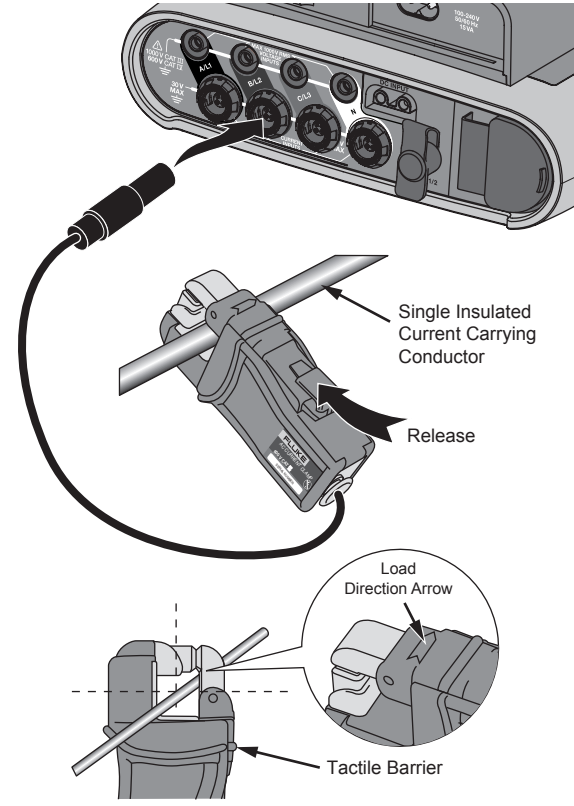
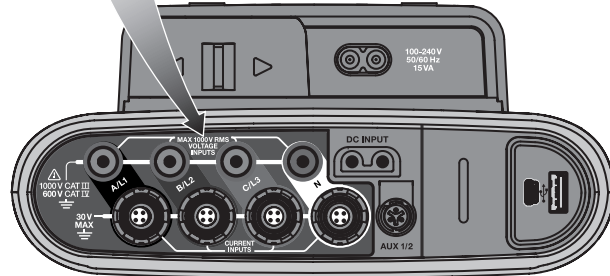
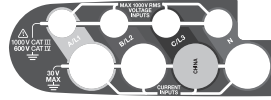
Europe/UK (New STD 4280531)



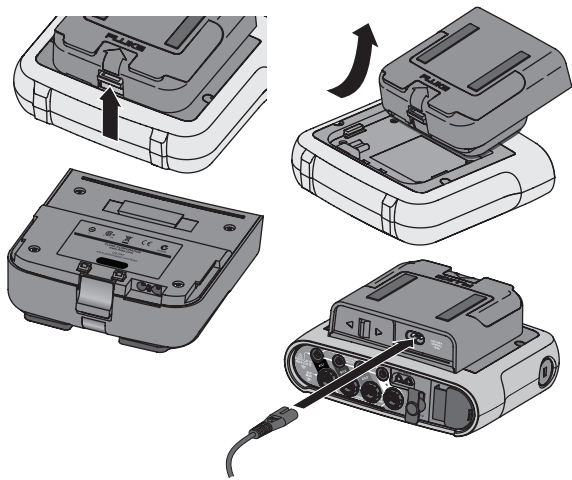
UK (4280554)



China (4280568)

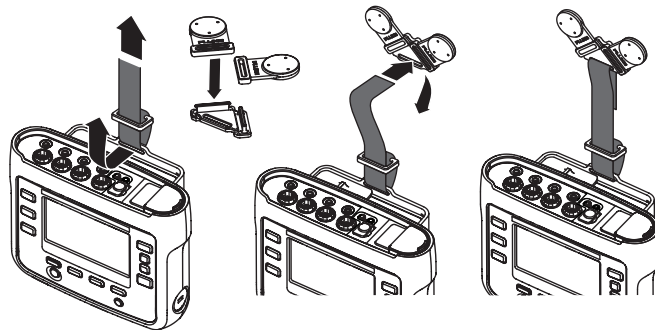


Power Supply

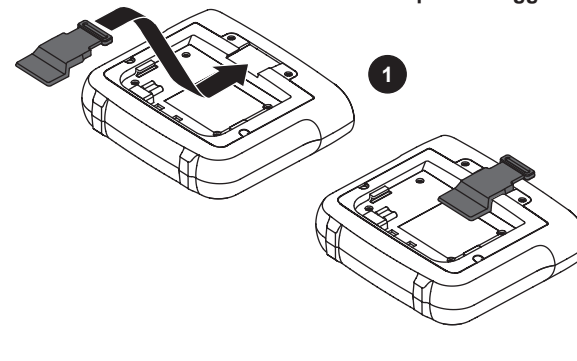


Hanger Kit

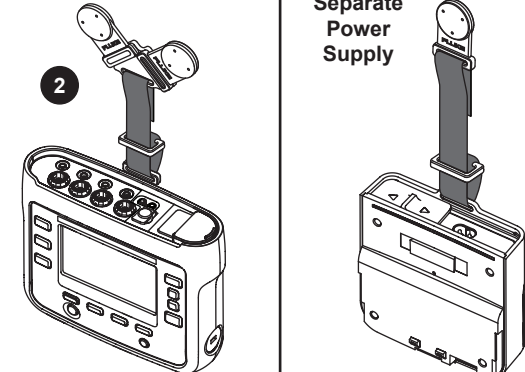
Combination Logger/Power Supply



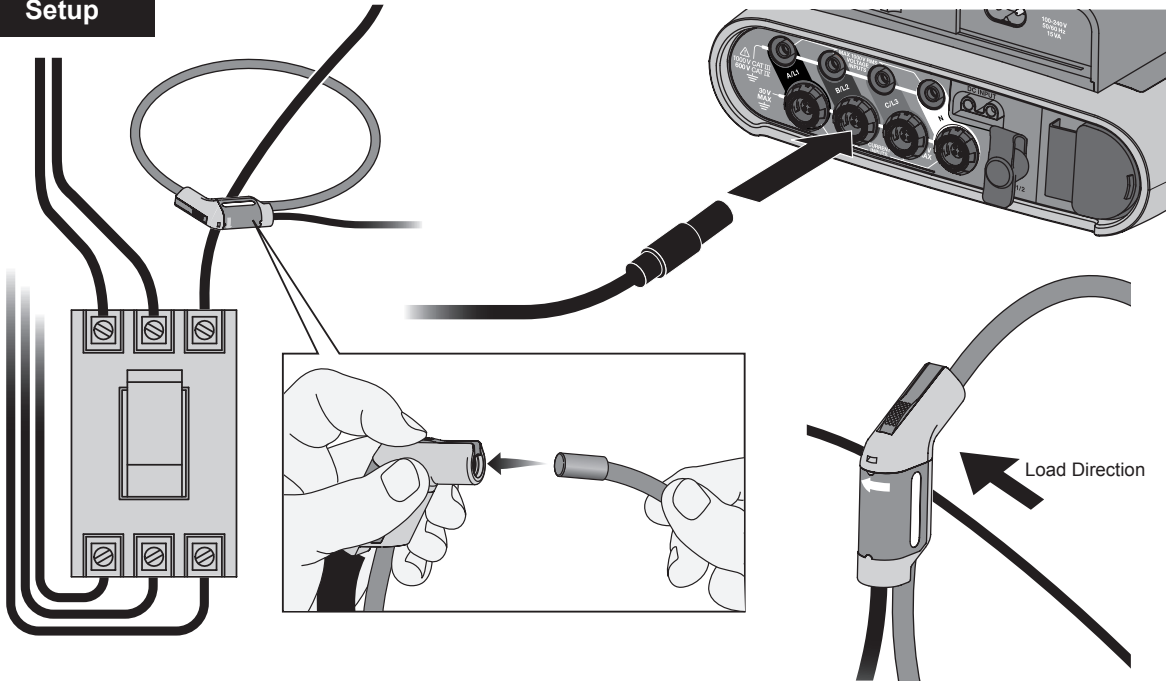
Separate Logger



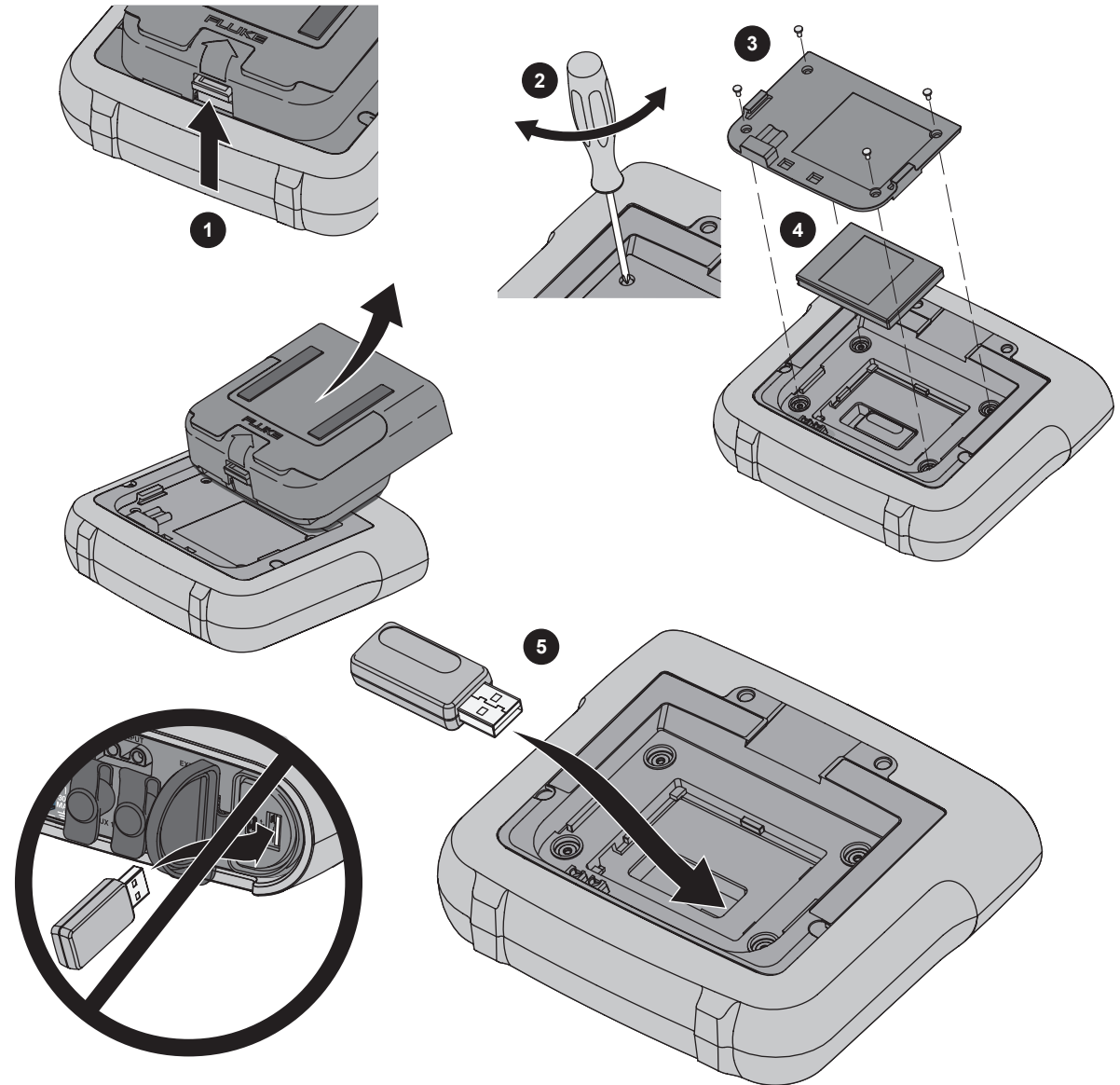
Separate Power Supply



Setup



WiFi-BLE Adapter



USB

